

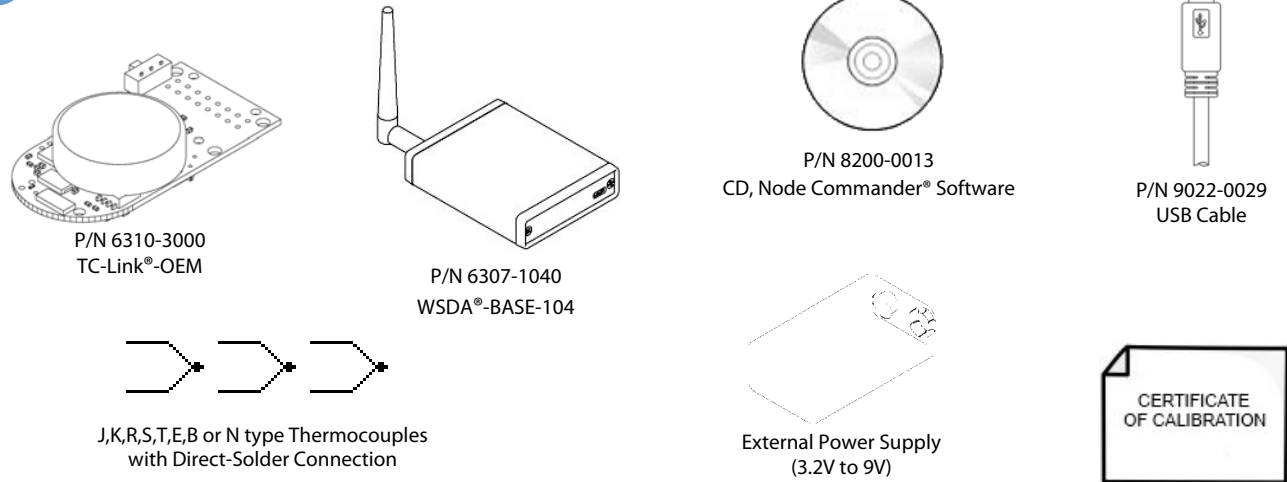
Quick Start Guide

TC-Link®-OEM Wireless Thermocouple Node



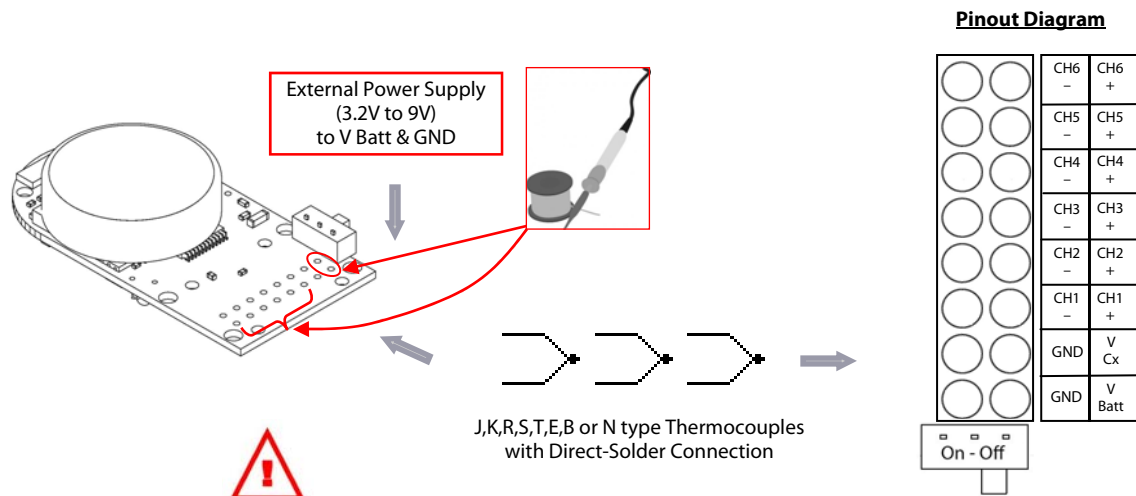
Questions or problems during setup? Go to www.microstrain.com/support or call Technical Support: 1.800.449.3878 or 1.802.862.6629

1 WHAT YOU NEED



2a ASSEMBLE AND CONNECT

NODE ASSEMBLY

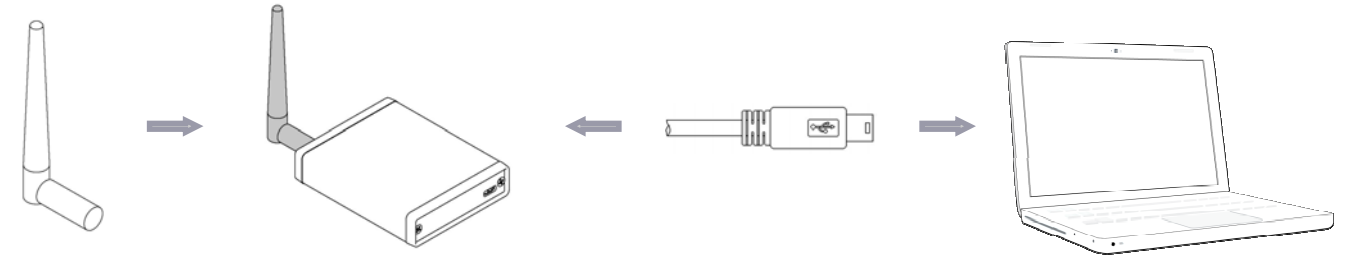


DO NOT MIX THERMOCOUPLE TYPES
(Use the same thermocouple type for all channels)

- Upon powering the TC-Link®-OEM, the Device Status LED flashes rapidly to indicate a successful boot-up
- LED "pulsing" indicates that the TC-Link®-OEM is active and in an idle state

2b ASSEMBLE AND CONNECT

BASE UNIT ASSEMBLY



3a INSTALL AND CONFIGURE

