

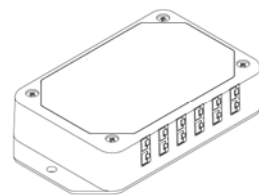
Quick Start Guide

TC-Link®-mXRS® 6 Channel
Wireless Thermocouple Node

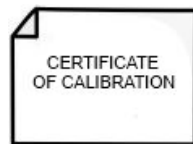
Questions or problems during setup? Go to www.microstrain.com/support
or call Technical Support: 1.800.449.3878 or 1.802.862.6629



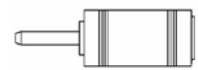
1 WHAT YOU NEED



P/N 6310-5000
TC-Link®-6CH-mXRS®



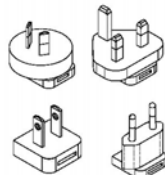
CERTIFICATE
OF CALIBRATION



P/N 9008-0134
Connector, DC adapter, 1.3mm-2.1mm



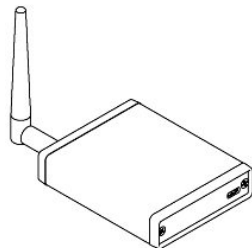
P/N 9011-0009
Power Supply, 100-240VAC, 9V, SA



P/N 9011-0022
Power Supply Adapter Kit



J,K,R,S,T,E,B or N type
Thermocouples with Type 1
Standard Mini (SM)
Flat-pin Connectors



P/N 6307-1040
WSDA®-BASE-104



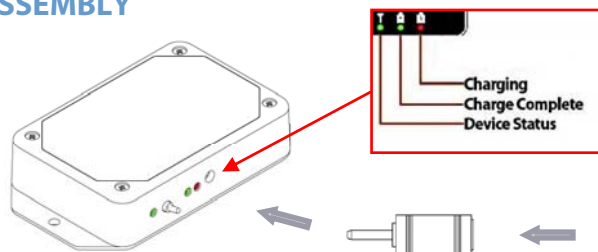
P/N 9022-0029
USB Cable



P/N 8200-0013
CD, Node Commander® Software

2a ASSEMBLE AND CONNECT

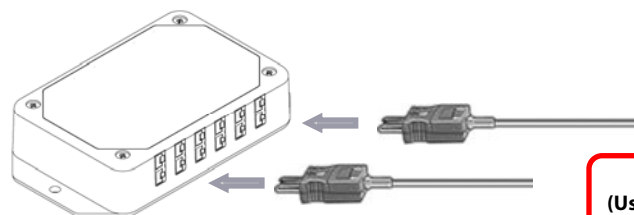
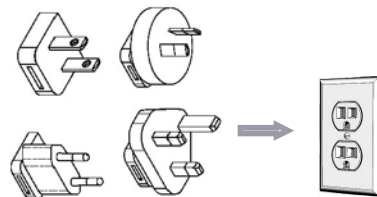
NODE ASSEMBLY



Charging
Charge Complete
Device Status

POWER OFF the TC-Link®-6CH-mXRS®
and charge for 5-6 hours before using

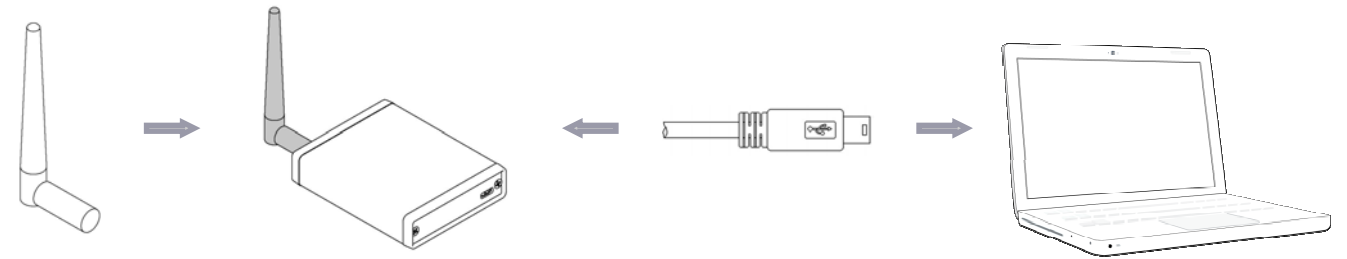
- While charging, red LED is lit (bright red); a dim red LED indicates charging failure status. If the red LED is dim, unplug/re-plug the power supply
- When charge complete, red LED turns off and battery charged LED turns green
- Device Status LED flashes rapidly to indicate a successful boot-up. LED 'pulsing' indicates that the TC-Link®-6CH-mXRS® is active and in an idle state (Device Status LED located to the left of the power toggle switch)



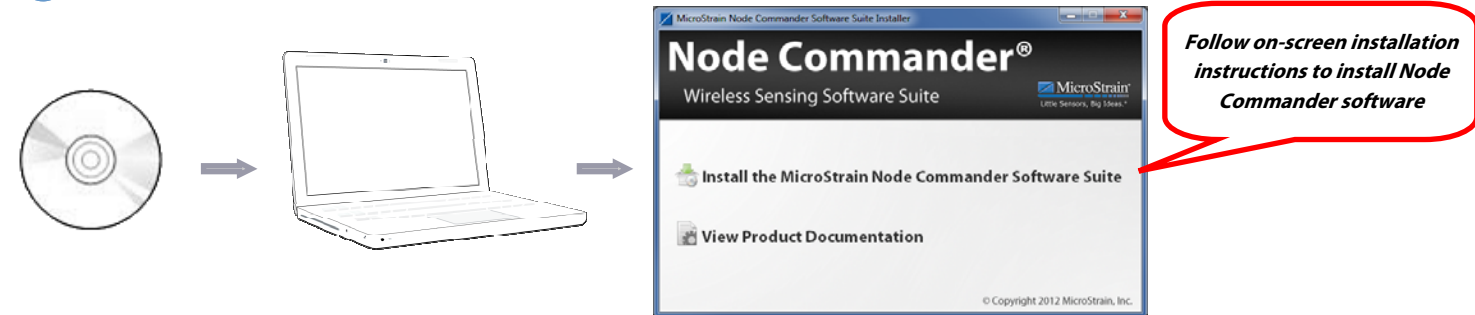
DO NOT MIX THERMOCOUPLE TYPES
(Use the same thermocouple type for all channels)

2b ASSEMBLE AND CONNECT

BASE UNIT ASSEMBLY



3a INSTALL AND CONFIGURE

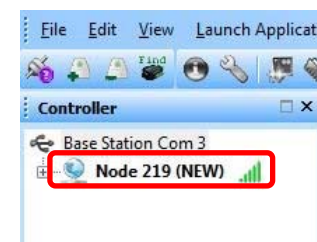
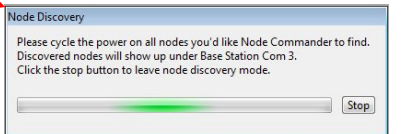
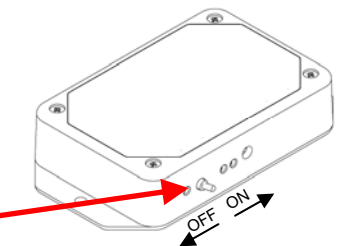
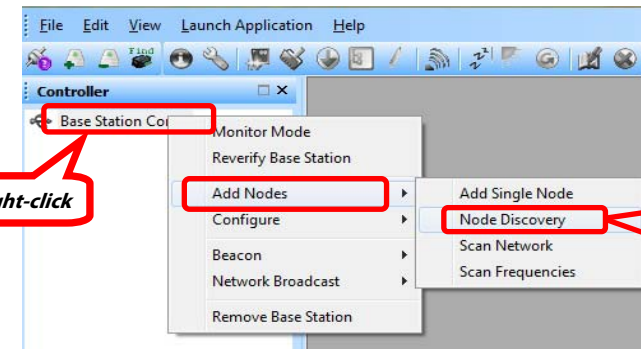


Follow on-screen installation
instructions to install Node
Commander software

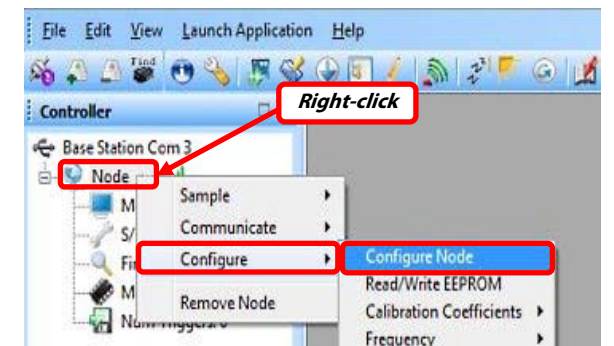
Double-click Node Commander
icon on the Desktop



Right-click



Right-click



3b INSTALL AND CONFIGURE

1. Select measurement

2. Select chan-

3. Select units:
 • If Temperature, choose °C, °F, °K or Other
 • If Voltage, choose mV, µV, V or Other

4. Select units for Cold Junction Compensation Temperature: Choose °C, °F, °K or

5. Only use for optional Relative Humidity sensor

6. Select thermocouple type: K, J, R, S, T, E, B or N

7. Select measurement range for resolution control (Narrow, Standard or Wide)

8. ADC Filter Settling Time tied to sampling rate; default usually correct

9. Select Action:
 • Log Only uses least power (NOTE: LOGGING STOPS WHEN MEMORY FULL)
 • Transmit Only uses moderate power
 • Log and Transmit uses most power

10. Choose Sample Rate

11. Choose Number of sweeps or Unlimited Sample Duration

12. Choose preferred boot mode:
 • Normal Boot Mode
 • Low Duty Cycle on Startup
 • Synchronized Sampling on Startup
 • Sleep on Startup

13. Transmit Power Level:
 • Extended Range uses most power
 • Standard Range uses moderate power
 • Low Power Mode uses least

**Note: Selected channels are polled, therefore thermocouples can be moved to different selected channels and data collection automatically begins for those channels (i.e., you can hot-swap thermocouples between selected channels of varying sample*

4a ACQUIRE DATA

REMOVE POWER ADAPTER!
 Do not acquire data while node is plugged into AC power as this will introduce noise to the data signal

Right-click

1. Note data file location

2. Limit file size here - note free space available

3. Click "Apply Network Configuration"; Click "Start Sampling"

Nodes	Type	Active Channels	Sampling Mode	Sample Rate	Sweeps	% of Bandwidth	Status
Node 219	TC-Link 6CH-mXRS	3	Continuous	1 Hz	Unlimited	0.782 %	In Network

Total Nodes: 1 Total Bandwidth: 0.78 %

CSV Location: C:\ProgramData\MicroStrain\NodeCommander\Data

Limit Master File Size (stops network): 1 MB Free Space: 355.54 GB

Normal Capacity (Low Latency) High Capacity (Lowest Power)

Remove Selected Configure Selected Refresh Selected Apply Network Configuration Start Sampling Close

4b ACQUIRE DATA

Click red x to stop acquiring data

Adjust X-Axis width to zoom in on data

Toggle between Graph and Data

Note file name and location

Status alerts

Attempting to open com 3
 Opened com 3 successfully
 Attempting to write EEPROM 224 on Base Station com 3
 Successful EEPROM write on Base Station com 3
 Successfully enabled the Beacon on Base Station com 3
 Attempting to close com handle 3
 Com 3 successfully closed

5 VIEW STORED DATA

File Edit View Launch Application Help

Explore Data Directory

Name	Date modified	Type
Sampled Data	4/17/2012 11:51 AM	File folder
Streaming	4/16/2012 3:53 PM	File folder

Name	Date modified	Type	Size
Node_310 04-16-2012 T19_42_09	4/16/2012 3:42 PM	Microsoft Excel C...	486 KB
Node_310 04-16-2012 T19_43_24	4/16/2012 3:44 PM	Microsoft Excel C...	942 KB
Node_310 04-16-2012 T19_44_48	4/16/2012 3:45 PM	Microsoft Excel C...	474 KB

CONTACT MICROSTRAIN, INC.

TC-Link® -mXRS® 6 Channel Wireless Thermocouple Node
 See <http://www.microstrain.com/wireless/tc-link-6ch> for more information.

MicroStrain, Inc.
 459 Hurricane Lane, Suite 102
 Williston, VT 05495 USA
 Phone: 1.802.862.6629
 Fax: 1.802.863.4093
 Web: www.microstrain.com