

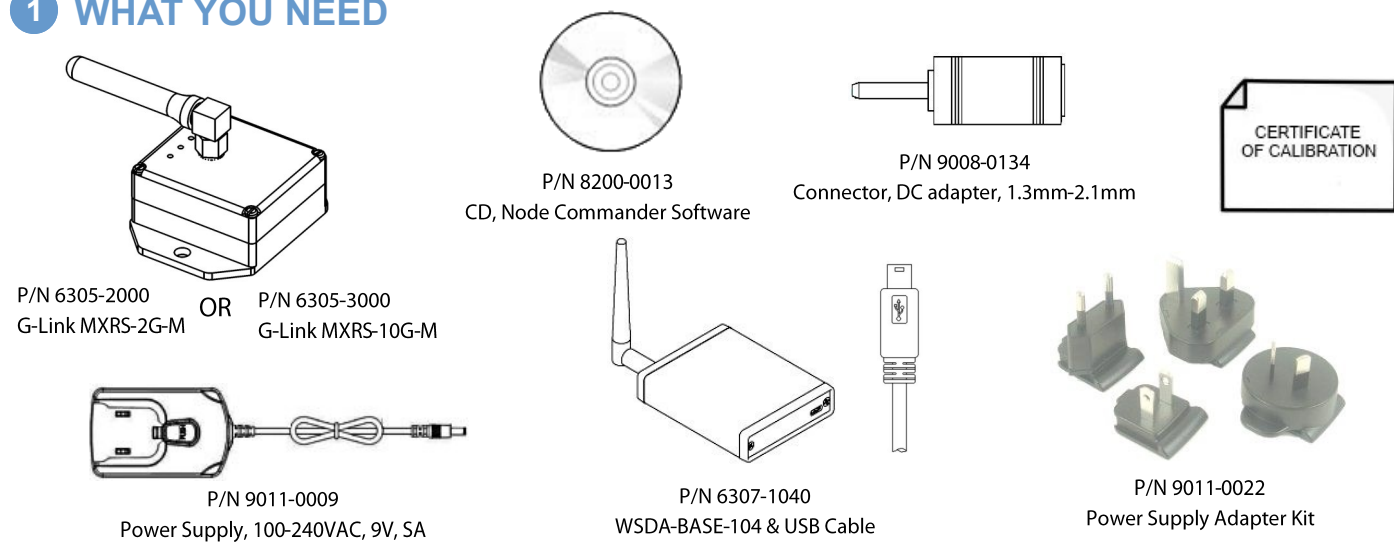
Quick Start Guide

G-Link® Wireless Accelerometer Node

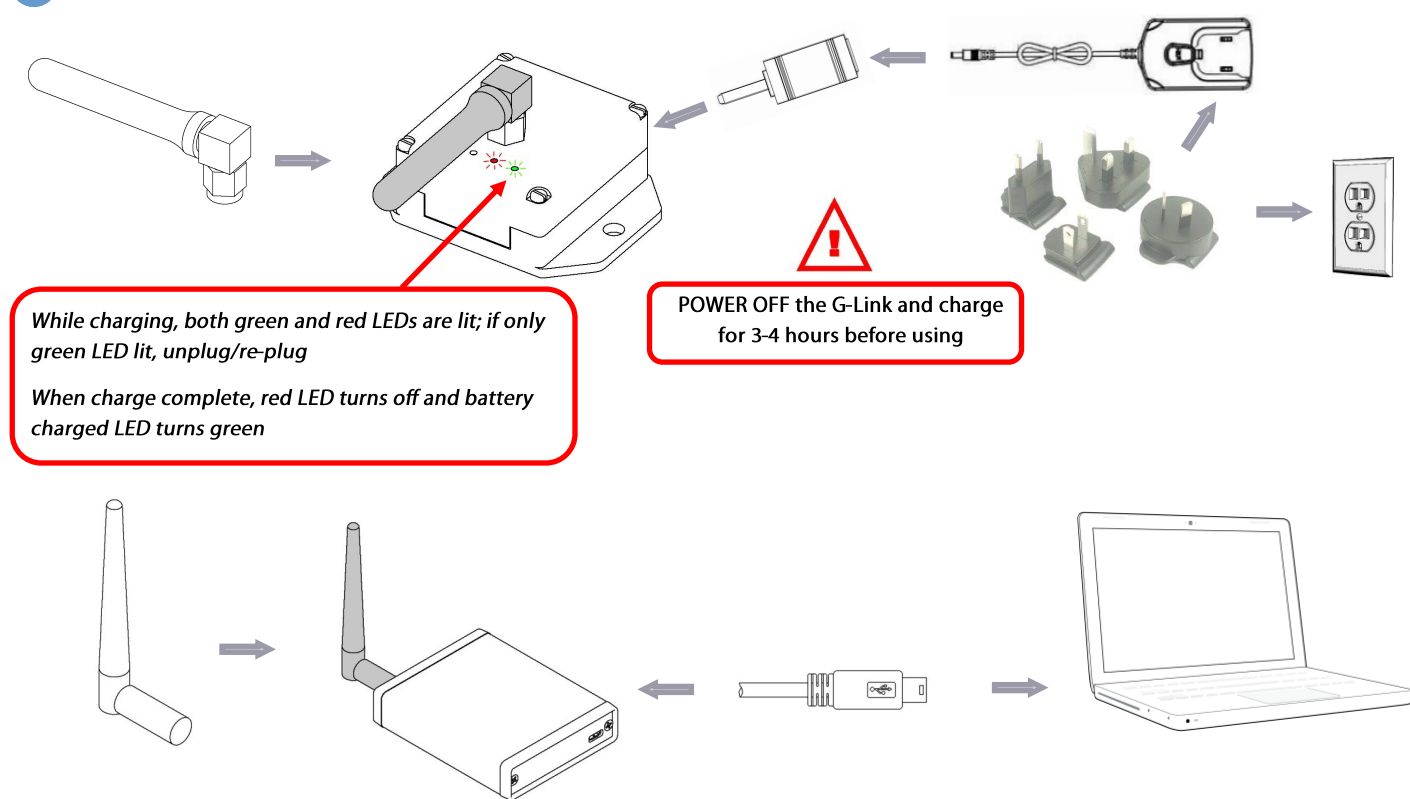
Questions or problems during setup? Go to www.microstrain.com/support or call Technical Support: 1.800.449.3878 or 1.802.862.6629



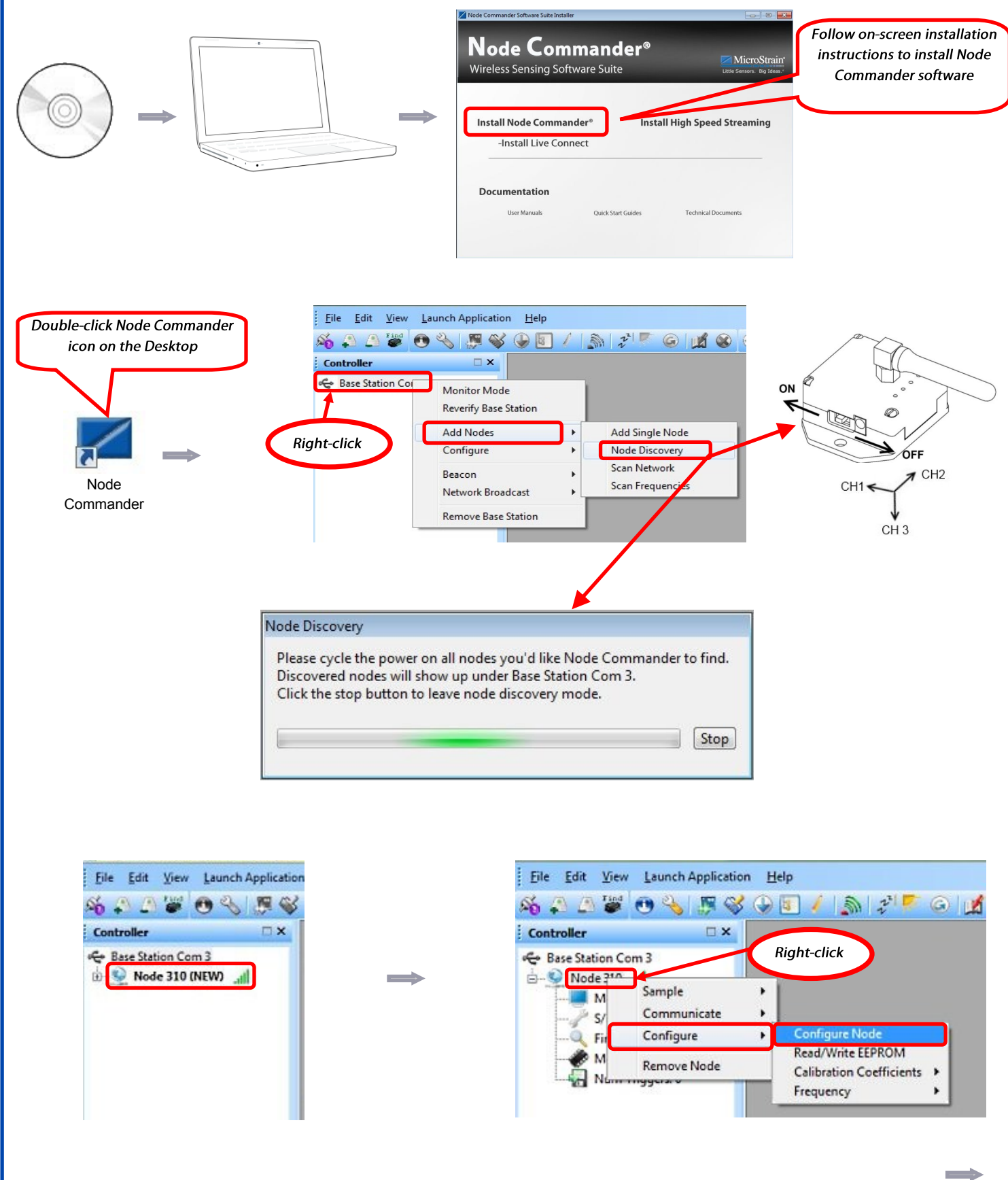
1 WHAT YOU NEED



2 ASSEMBLE AND CONNECT



3 INSTALL AND CONFIGURE



3 INSTALL AND CONFIGURE (continued)

Configuration - Node 310

Channels | Streaming | Synchronized Sampling | Low Duty Cycle | Datalogging | Power Management | RF | Information

Channel Enabled | Physical Units Conversion | Hardware Gain | Label | Configure

1. [x] Acceleration | G | [x] [x]

2. [x] Acceleration | G | [x] [x]

3. [x] Acceleration | G | [x] [x]

4. [] Temperature | °F | [x] [x]

Apply OK Cancel

Configuration - Node 310

Channels | Streaming | Synchronized Sampling | Low Duty Cycle | Datalogging | Power Management | RF | Information

Continuous | Burst

Sampling Settings

Sample Rate: 16 Hz

[x] Unlimited Sample Duration

Sweeps: 998100

Time Duration: 62381.250 sec

Percent of Total Bandwidth: 0.78 %

Apply OK Cancel

4 ACQUIRE DATA

REMOVE POWER ADAPTER!

Do not acquire data while node is plugged into AC power as this will introduce noise to the data signal

File Edit View Launch Application Help

Controller

Base Station Com 3

Node 310

Sample | Communicate | Configure

Synchronized Sampling | Low Duty Cycle | Stream

Status alerts

Synchronized Sampling

Nodes	Type	Active Channels	Sampling Mode	Sample Rate	Sweeps	% of Bandwidth	Status
Node 310	G-Link mXRS 2G	3	Continuous	16 Hz	Unlimited	0.782 %	In Network

Total Nodes: 1 | Total Bandwidth: 0.78 %

CSV Location: C:\ProgramData\MicroStrain\NodeCommander\Data

Limit Master File Size (stops network): 1 MB | Free Space: 379.97 GB

Normal Capacity (Low Latency) | High Capacity (Lowest Power)

Remove Selected | Configure Selected | Refresh Selected | Apply Network Configuration | Start Sampling | Close

4 ACQUIRE DATA (continued)

File Edit View Launch Application Help

Controller

Base Station Com 3 (Monitoring)

Node 310 (Sync)

Model: G-Link mXRS 2G

S/N: 2418-0310

Firmware: 7.29

Memory Full: 0%

Num Triggers: 0

View Mode: Graph

Saving To: C:\ProgramData\MicroStrain\NodeCommander\Data\Sampled Data\session 04-30-2012 T14_26_53\Master_04-30-2012 T14_26_53.csv

Open File Size: 186.61 KB

Available Nodes

Zoom [%]: Auto

X-Axis Width: 120

Node 310

Click red x to stop acquiring data

Toggle between Graph and Data modes

Adjust X-Axis width to zoom in on data

Note file name and location

Status alerts

5 VIEW STORED DATA

File Edit View Launch Application Help

Explore Data Directory

Exit

Name	Date modified	Type
Sampled Data	4/17/2012 11:51 AM	File folder
Streaming	4/16/2012 3:53 PM	File folder

Name	Date modified	Type	Size
Node_310 04-16-2012 T19_42_09	4/16/2012 3:42 PM	Microsoft Excel C...	486 KB
Node_310 04-16-2012 T19_43_24	4/16/2012 3:44 PM	Microsoft Excel C...	942 KB
Node_310 04-16-2012 T19_44_48	4/16/2012 3:45 PM	Microsoft Excel C...	474 KB
Node_310 04-16-2012 T19_45_52	4/16/2012 3:46 PM	Microsoft Excel C...	1,987 KB
Node_310 04-16-2012 T19_47_16	4/16/2012 3:47 PM	Microsoft Excel C...	1,094 KB
Node_310 04-16-2012 T19_48_30	4/16/2012 3:48 PM	Microsoft Excel C...	132 KB
Node_310 04-16-2012 T19_52_12	4/16/2012 3:53 PM	Microsoft Excel C...	1,576 KB
Node_310 04-16-2012 T19_53_17	4/16/2012 3:53 PM	Microsoft Excel C...	406 KB

CONTACT MICROSTRAIN, INC.

G-Link® Wireless Accelerometer Node
 See <http://www.microstrain.com/wireless/g-link> for more information.

MicroStrain, Inc.
 459 Hurricane Lane, Suite 102
 Williston, VT 05495 USA
 Phone: 1.802.862.6629
 Fax: 1.802.863.4093
 Web: www.microstrain.com