

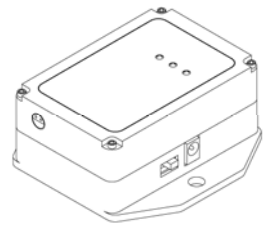
Quick Start Guide

DVRT-Link™-LXRS™
Wireless Displacement Node

Questions or problems during setup? Go to www.microstrain.com/support or call Technical Support: 1.800.449.3878 or 1.802.862.6629



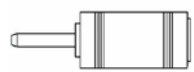
1 WHAT YOU NEED



P/N 6318-1000
DVRT-Link™-LXRS™



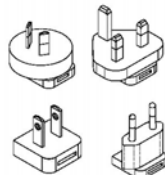
CERTIFICATE OF CALIBRATION



P/N 9008-0134
Connector, DC adapter, 1.3mm-2.1mm



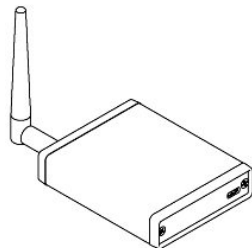
P/N 9011-0009
Power Supply, 100-240VAC, 9V, SA



P/N 9011-0022
Power Supply Adapter Kit



Custom
DVRT Sensor



P/N 6307-1040
WSDA-BASE-104



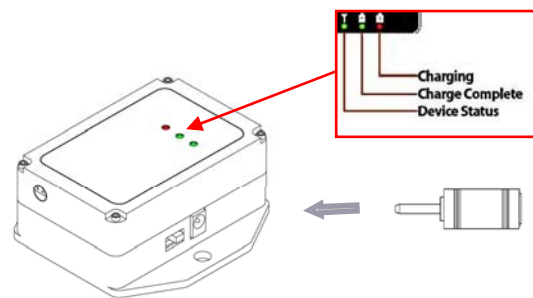
P/N 9022-0029
USB Cable



P/N 8200-0013
CD, Node Commander Software

2a ASSEMBLE AND CONNECT

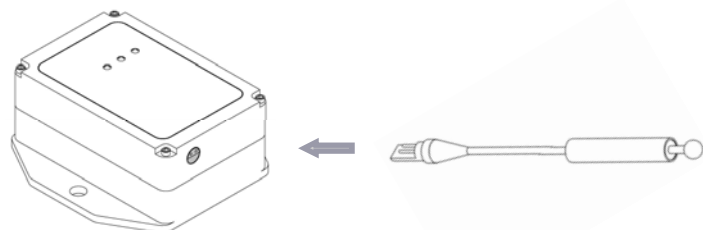
NODE ASSEMBLY



Charging
Charge Complete
Device Status

POWER OFF the DVRT-Link™-LXRS™
and charge for 3-4 hours before using

- While charging, both green and red LEDs are lit; if only green LED lit, unplug/re-plug
- When charge complete, red LED turns off and battery charged LED turns green
- Device Status LED flashes rapidly to indicate a successful boot-up. LED 'pulsing' indicates that the DVRT-Link™-LXRS™ is active and in an idle

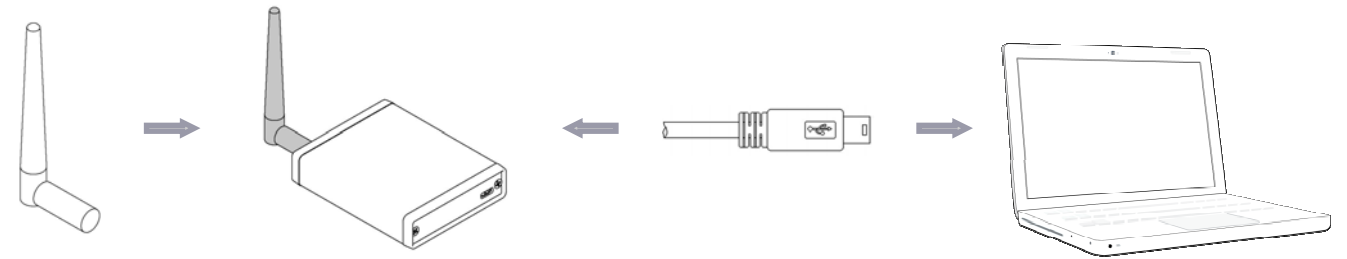


DVRT sensors ARE NOT INTERCHANGEABLE
with other DVRT-Link™-LXRS™ units

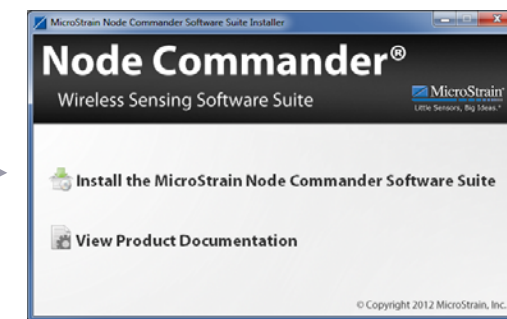
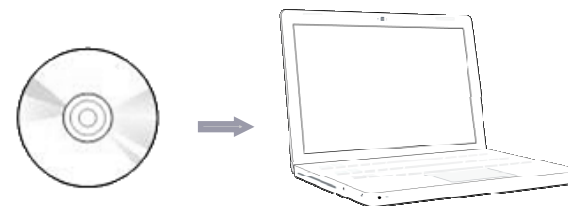


2b ASSEMBLE AND CONNECT

BASE UNIT ASSEMBLY

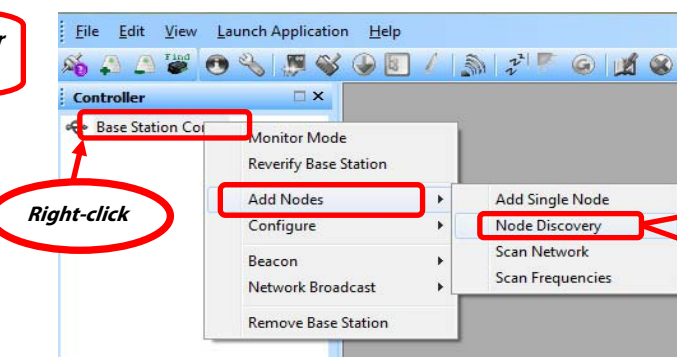


3a INSTALL AND CONFIGURE

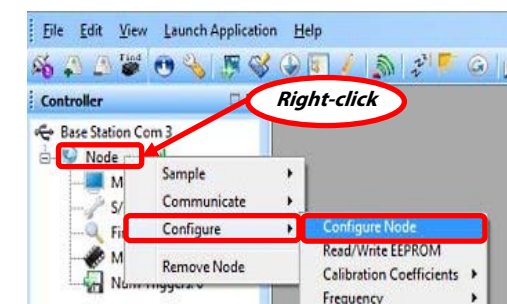
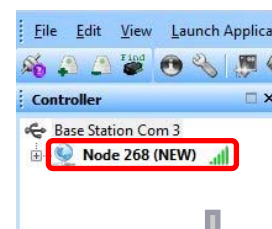
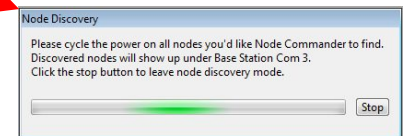
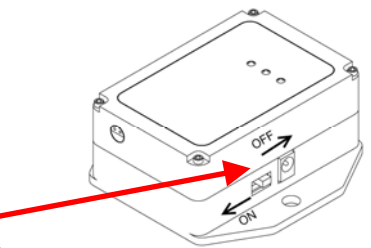


Follow on-screen installation instructions to install Node Commander software

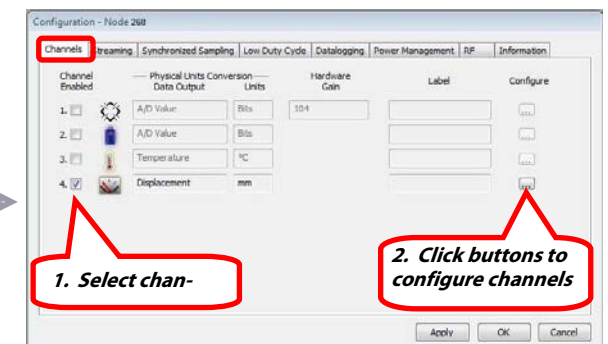
Double-click Node Commander icon on the Desktop



Right-click



Right-click

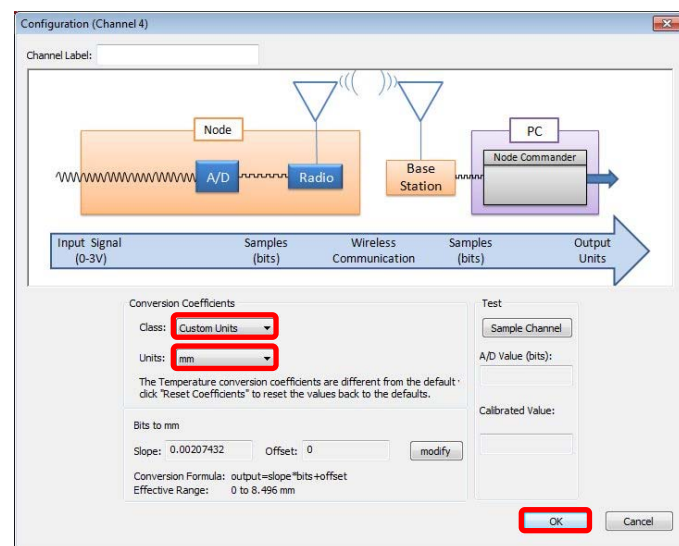


1. Select chan-

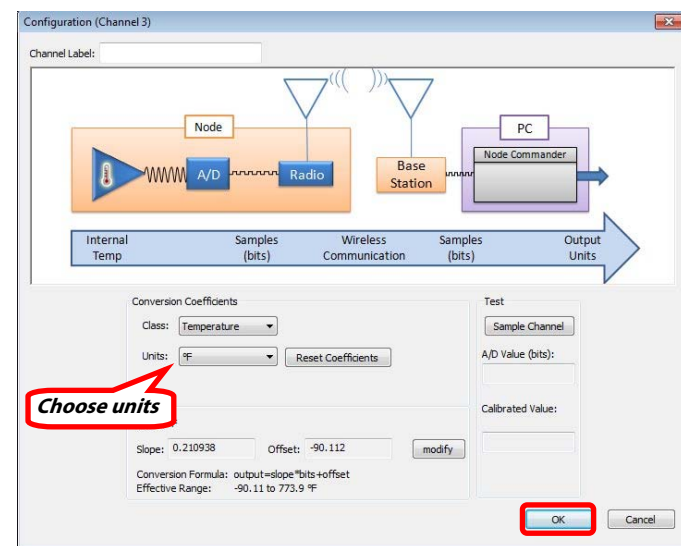
2. Click buttons to configure channels

3b INSTALL AND CONFIGURE

DISPLACEMENT SETTINGS



TEMPERATURE SETTINGS



4a ACQUIRE DATA

REMOVE POWER ADAPTER!
Do not acquire data while node is plugged into AC power as this will introduce noise to the data signal

Right-click

1. Note data file location

2. Limit file size here - note free space available

3. Click "Apply Network Configuration"; Click "Start Sampling"

| Nodes | Type | Active Channels | Sampling Mode | Sample Rate | Sweeps | % of Bandwidth | Status |
|----------|----------------|-----------------|---------------|-------------|--------|----------------|------------|
| Node 268 | DVRT-Link-LXRS | 3 | Continuous | 16 Hz | 3000 | 0.782 % | In Network |

Total Nodes: 1 Total Bandwidth: 0.78 %

CSV Location: C:\ProgramData\MicroStrain\NodeCommander\Dat

Limit Master File Size (stops network): 1 MB Free Space: 378.44 GB

Normal Capacity (Low Latency) High Capacity (Lowest Power)

Buttons: Remove Selected, Configure Selected, Refresh Selected, Apply Network Configuration, Start Sampling, Close

4b ACQUIRE DATA

Click red x to stop acquiring data

Toggle between Graph and Data

Adjust X-Axis width to zoom in on data

Note file name and location

Status alerts

5 VIEW STORED DATA

File **Explore Data Directory**

| Name | Date modified | Type |
|--------------|--------------------|-------------|
| Sampled Data | 4/17/2012 11:51 AM | File folder |
| Streaming | 4/16/2012 3:53 PM | File folder |

| Name | Date modified | Type | Size |
|-------------------------------|-------------------|----------------------|--------|
| Node_310 04-16-2012 T19_42_09 | 4/16/2012 3:42 PM | Microsoft Excel C... | 486 KB |
| Node_310 04-16-2012 T19_43_24 | 4/16/2012 3:44 PM | Microsoft Excel C... | 942 KB |
| Node_310 04-16-2012 T19_44_48 | 4/16/2012 3:45 PM | Microsoft Excel C... | 474 KB |

CONTACT MICROSTRAIN, INC.

DVRT-Link™-LXRS™ Wireless Displacement Node
See <http://www.microstrain.com/wireless/dvrt-link> for more information.

MicroStrain, Inc.
459 Hurricane Lane, Suite 102
Williston, VT 05495 USA
Phone: 1.802.862.6629
Fax: 1.802.863.4093
Web: www.microstrain.com