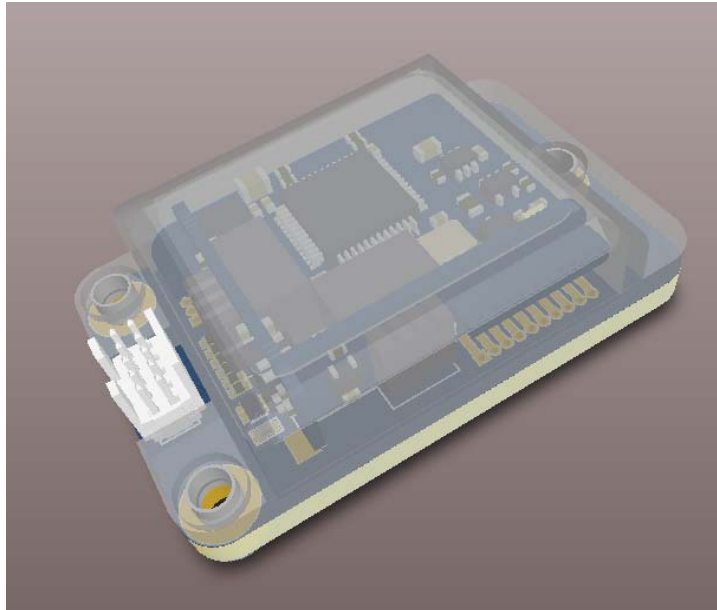


3DM-GX3-25 OEM Mounting Information

Preliminary 4/20/2009



Connector:

The connector used on the 3DM-GX3-25 OEM module is a Samtec fine pitch (0.050”) 5 x 2 (10 pin) keyed header connector. Cables are IDC ribbon cables. Connectors and cables in any length can be ordered directly from Samtec. Refer to the Samtec website for specific order information.

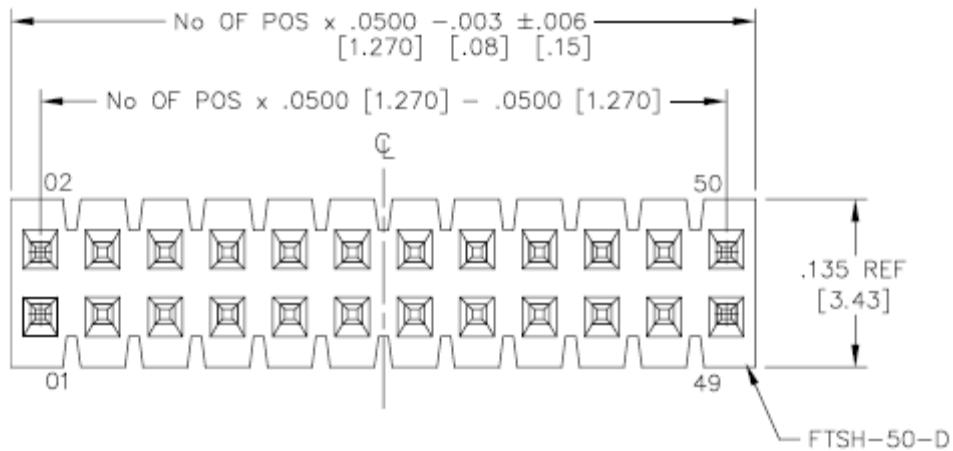
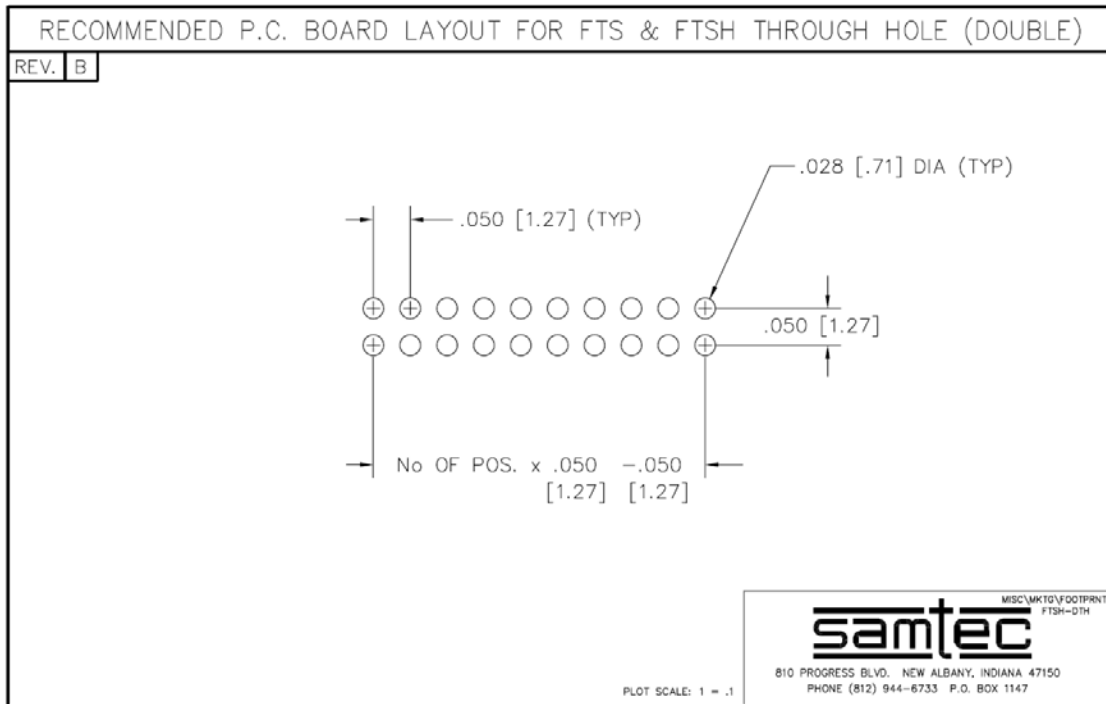
Connector: Samtec FTSH-105-01-F-D-K.
Mates with Samtec FFSD-05-D-xx.xx-01-N (where xx.xx is length of cable in inches)

Pinout:

Pin	Name	Type	Description
1	USBDM	BiDir	USB D- Signal
2	USBDP	BiDir	USB D+ Signal
3	VBUS	Power	Power – Minimum 3.1 volts, Maximum 5.5 volts DC
4	UARTRX	Input	LVTTL (5V Tolerant) Serial UART receive (connect to host Transmit)
5	UARTTX	Output	LVTTL (5V Tolerant) Serial UART transmit (connect to host Receive)
6	NC		not connected
7	GPIO1	I/O	General purpose I/O
8	GND	Ground	Power and signal ground
9	GPIO2	I/O	General purpose I/O
10	nENABLE	Input	Module enable. LVTTL low enables. LVTTL high disables

FTSH Connector Footprint:

This information is provided to assist layout of an interface connector on the host printed circuit board.



Module Mounting information:

The overall dimensions of the module will not exceed 24mm x 38mm x 12mm +/-0.20. Three mounting holes are required. These should be drilled and tapped for #2-56 screws or drilled for #2-56 screws and nuts. Brass, aluminum, nylon, or 300 series stainless should be used for all mounting hardware to avoid magnetic field interference. Magnetometer is located in the upper left corner – opposite the connector end.

