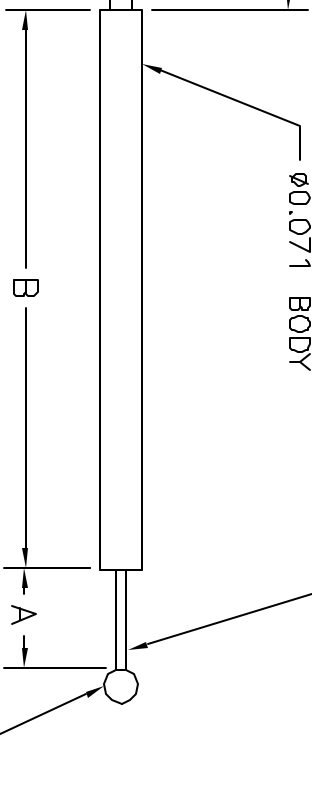
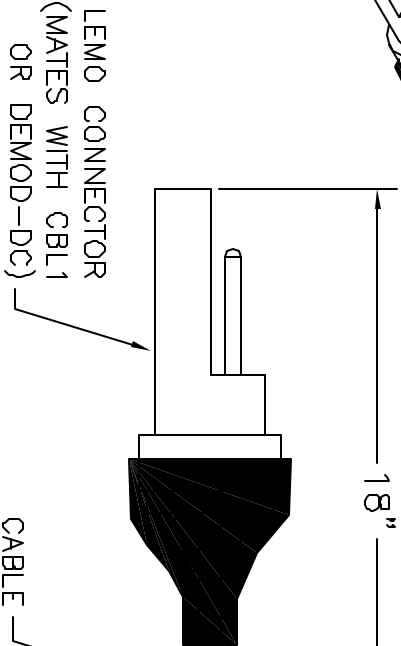
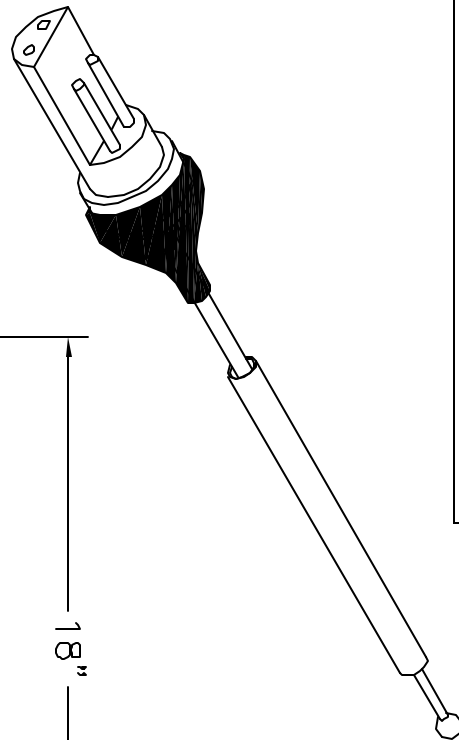


THIS DRAWING AND SPECIFICATIONS ARE THE PROPERTY OF MICROSTRAIN INC. AND SHALL NOT BE REPRODUCED WITHOUT PERMISSION FROM MICROSTRAIN INC.



SAPPHIRE BEARING GUIDED,
SPRING LOADED CORE.
COMPRESSES "X" MM
(LINEAR STROKE)

1.5MM SPHERICAL
TIP (OTHER STYLES
AVAILABLE)

REVISIONS		1005-0004		
ZONE	REV	DESCRIPTION	DATE	APPROVED
	A	FINAL DESIGN	7/24/02	

LINEAR STROKE "X"	SENSOR LENGTH "B"	MAXIMUM TRAVEL "A"
0.118 (3)	0.94 (24)	0.16 (4)
0.236 (6)	1.55 (39.4)	0.28 (7)
0.354 (9)	1.96 (49.8)	0.39 (10)

SENSOR CABLE IS SHIELDED AND TEFLON COATED
EACH CONDUCTOR IS WRAPPED AROUND A
STAINLESS STEEL WIRE FOR INCREASED TENSILE
STRENGTH.

UNLESS OTHERWISE SPECIFIED ALL
DIMENSIONS ARE IN INCHES.
TOLERANCES (UOS)
FRACTIONS: $\pm 1/64$
DECIMALS: .XX ± 0.01
XXX ± 0.005
ANGLES: ± 0.5 DEGREES
SURFACE FINISH: 63 MICRONS

MicroStrain®
294 N. Winoski Ave.
Burlington, VT
(P) 802-862-6629

TITLE
MG-DVRT-X

DRAWN BY: SP/ SW/M	SIZE: A	CAGE CODE: 0XYZ9	DWG NO.: 1005-0004	REV: A
APPROVED BY:	SCALE: 3:1	DATE: 16 MAY 2002	SHEET: 1 OF 1	