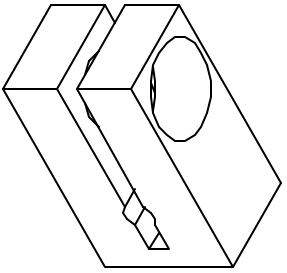
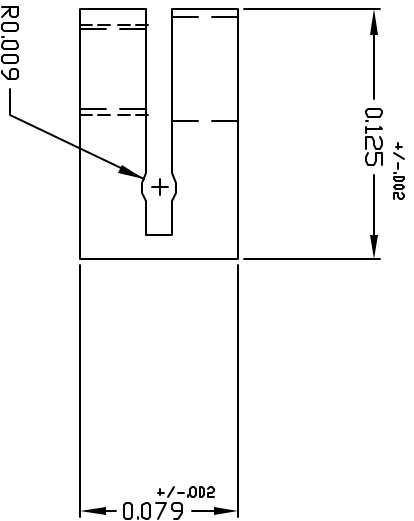
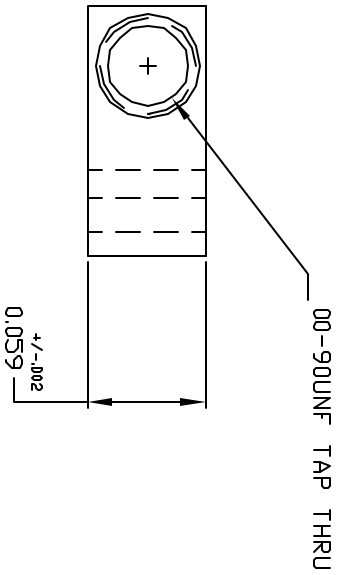


(C) MICROSTRAIN, INC. 1998. ALL RIGHTS RESERVED.
 THIS DRAWING AND SPECIFICATIONS ARE THE PROPERTY OF
 MICROSTRAIN INC. AND SHALL NOT BE REPRODUCED WITHOUT
 PERMISSION FROM MICROSTRAIN INC.



REVISIONS			1000-7004	
ZONE	REV	DESCRIPTION	DATE	APPROVED
A		INCREASE WIDTH	4/30/97	



- NOTES:
1. DRAWN IN ACCORDANCE WITH ANSI Y14.5M-1982.
 2. MATERIAL: 300 SERIES STAINLESS STEEL.
 3. CHAMFER ALL EDGES .010/.005

UNLESS OTHERWISE SPECIFIED ALL
 DIMENSIONS ARE IN INCHES.
 TOLERANCES (UOS)
 FRACTIONS: $\pm 1/64$
 DECIMALS: .XX $\pm .01$
 .XXX $\pm .005$
 ANGLES: ± 0.5 DEGREES
 SURFACE FINISH: 63 MICROINCHES

DRAWN BY: Steven Mundell

APPROVED BY:

 **MicroStrain** ©
 294 N. Winooski Ave.
 Burlington, VT
 (P) 802-862-6629

TITLE
 M-ATT-C3

SIZE: A
 FSCM NO.:
 DWG NO.: 1000-7004

SCALE: 10:1
 DATE: 20 AUGUST 1998
 SHEET: 1 OF 1

REV
 A